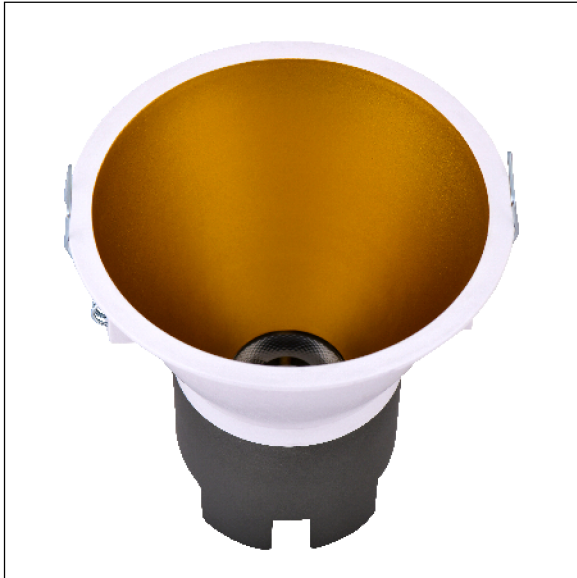


DOWNLIGHT SIRA EMPOTRAR REDONDO 10W 3000K 38° BL/OR DALI



Lighting with you

| | |
|----------------------------|---------------|
| REFERENCIA | 60303R38BOC |
| EAN-13 | 8433973512812 |
| CONSUMO | 10W |
| °K | 3000K |
| COLOR ITEM | Blanco/Oro |
| MATERIAL PRODUCTO | Aluminio + PC |
| LUMENS/WATT | 95Lm/W |
| LUMENS | 950LM |
| CHIP | CREE |
| NUMERO CHIPS | 1 PCS |
| DRIVER | LIFUD |
| VIDA UTIL | 30000H |
| FLICKER | No Flicker |
| FACTOR DE POTENCIA | ≥0.5 |
| SDCM | 5 |
| REGULACION | DALI |
| IP | IP20 |
| PROT.SOBRETENSIONES | 1KV |
| ORIENTABLE | No |
| ANGULO APERTURA | 38° |
| TEMP. TRABAJO | -10°+45° |
| VOLTAJE ENTRADA | 200-240VAC |
| CLASE | CLASE II |
| VOLTAJE SALIDA | 25-42V |
| FRECUENCIA | 50/60HZ |
| mA | 250mA |
| CRI | ≥80 |
| UGR | <19 |
| DIAMETRO | 93mm |
| ALTURA | 94,5mm |
| CORTE | 85mm |
| PESO | 0,2Kg |
| GARANTIA | 3 Años |
| CERTIFICADO | CE |