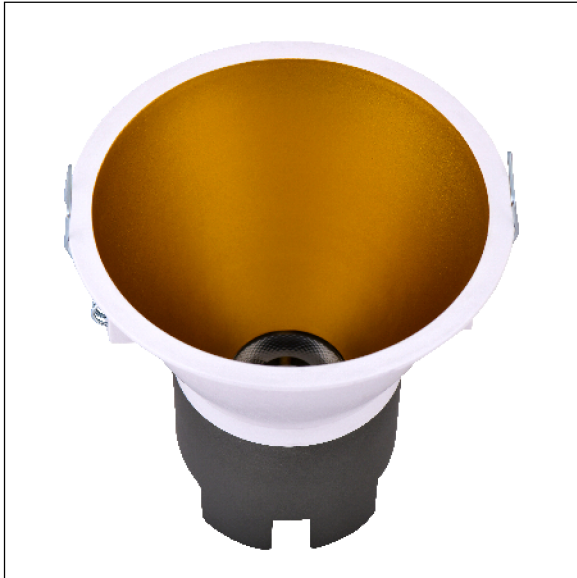


# DOWNLIGHT SIRA EMPOTRAR REDONDO 10W 4000K 24° BL/OR DALI



*Lighting with you*

|                            |               |
|----------------------------|---------------|
| <b>REFERENCIA</b>          | 60304R24BOC   |
| <b>EAN-13</b>              | 8433973513529 |
| <b>CONSUMO</b>             | 10W           |
| <b>°K</b>                  | 4000K         |
| <b>COLOR ITEM</b>          | Blanco/Oro    |
| <b>MATERIAL PRODUCTO</b>   | Aluminio + PC |
| <b>LUMENS/WATT</b>         | 100Lm/W       |
| <b>LUMENS</b>              | 1000LM        |
| <b>CHIP</b>                | CREE          |
| <b>NUMERO CHIPS</b>        | 1 PCS         |
| <b>DRIVER</b>              | LIFUD         |
| <b>VIDA UTIL</b>           | 30000H        |
| <b>FLICKER</b>             | No Flicker    |
| <b>FACTOR DE POTENCIA</b>  | ≥0.5          |
| <b>SDCM</b>                | 5             |
| <b>REGULACION</b>          | DALI          |
| <b>IP</b>                  | IP20          |
| <b>PROT.SOBRETENSIONES</b> | 1KV           |
| <b>ORIENTABLE</b>          | No            |
| <b>ANGULO APERTURA</b>     | 24°           |
| <b>TEMP. TRABAJO</b>       | -10°+45°      |
| <b>VOLTAJE ENTRADA</b>     | 200-240VAC    |
| <b>CLASE</b>               | CLASE II      |
| <b>VOLTAJE SALIDA</b>      | 25-42V        |
| <b>FRECUENCIA</b>          | 50/60HZ       |
| <b>mA</b>                  | 250mA         |
| <b>CRI</b>                 | ≥80           |
| <b>UGR</b>                 | <19           |
| <b>DIAMETRO</b>            | 93mm          |
| <b>ALTURA</b>              | 94,5mm        |
| <b>CORTE</b>               | 85mm          |
| <b>PESO</b>                | 0,2Kg         |
| <b>GARANTIA</b>            | 3 Años        |
| <b>CERTIFICADO</b>         | CE            |